



NEW PRODUCTS

COAXIAL SWITCH (4-position)

CS-401



■ Features

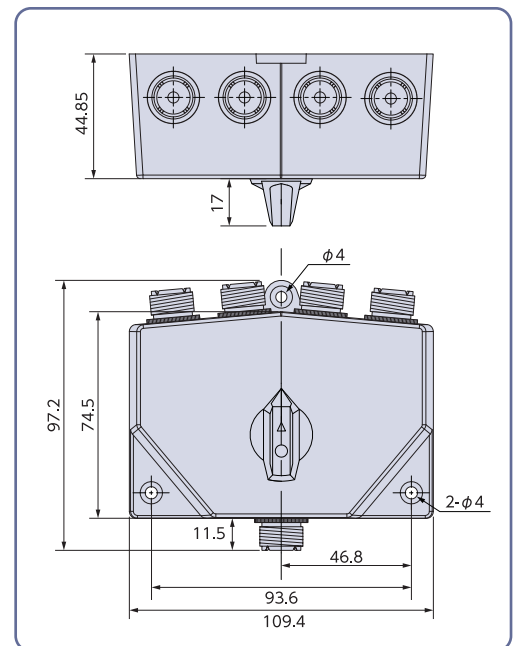
- ① This rotary switch has well-arranged input and output connectors, making it easy to see the connection positions.
- ② The unique switching mechanism provides high isolation between circuits.
- ③ The inactive antenna side is designed to always be grounded, allowing for stable and efficient switching.
- ④ If any of the four positions have an unused port, selecting that port during a thunderstorm can prevent damage to the radio from lightning.

However, selecting this port will not prevent damage to the radio if lightning strikes the connected antenna directly.

■ Caution

Do not change the switch while the radio is in the transmitting state. Always check that the radio is in the receiving state before changing the switch.

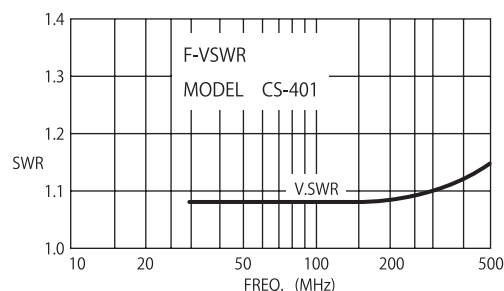
(The switch contacts are all grounded, so doing so is the same as shorting the output circuit of the switch.)



■ Specification

| | |
|------------------|-------------------------|
| Max Power Rating | 2.5KW (PEP), 1KW (CW) |
| Impedance | 50Ω |
| Insertion Loss | Less than 0.2dB |
| V.SWR | Less than 1.2 : 1 |
| Frequency range | DC to 500MHz |
| Isolation | More than 60dB (200MHz) |
| Output port | 4 |
| Connector | SO-239 |
| Dimensions | 109(W)×63 (H) ×98(D)mm |
| Weight | 0.86kg |

■ V.SWR Characteristics



■ Connection example

